

---

# Utah Virtual Academy: Efficacy of the Virtual Model

Jeff Herr and Lynn Black

Utah Virtual Academy, USA

---

**EETC** 2011  
EARLY EDUCATION AND  
TECHNOLOGY FOR CHILDREN

# Utah Virtual Academy: Efficacy of the Virtual Model



**UTAH**  
VIRTUAL ACADEMY <sup>SM</sup>

powered by **k** <sup>12</sup> <sup>TM</sup>



**UTAH**  
VIRTUAL ACADEMY <sup>SM</sup>



powered by



# Great Products That Failed

Tucker Sedan 1948

Concorde Jet

DeLorean

Betamax (vs. VHS)

Mini-Disc (vs recordable CD's)

GM (Pontiac) Aztek

DVD HD (vs. Blu-ray and PS3)



**UTAH**  
VIRTUAL ACADEMY <sup>SM</sup>



powered by



## **What is the Utah Virtual Academy?**

- The first virtual charter school delivered in Utah
- The State of Utah is our boundaries
- Comprehensive, all encompassing school
- Fully staffed with UT-Licensed teachers and administration. Staff of 50
- Partnership between parents, students and teachers
- 2050 Students for 2010-11
- First graduating class 2010-14 students, all in college/ university



**UTAH**  
VIRTUAL ACADEMY <sup>SM</sup>



powered by



## **Component of UTVA Learning**

1. On-line curriculum
2. All materials and equipment that students need
3. Fully certified and qualified teachers and staff. Teachers work from their homes
4. Extensive training for learning coaches as students learn from their homes



## Benefits of UTVA

- High-quality education option
- Individualized instruction
- Mastery-based learning program
- Continuous assessments
- Continuous feedback-within 24 hours on all communication
- Group outings-both classroom and schoolwide
- A full assortment of clubs for all ages
- Smart use of technology
- No time and distance barriers
- Parent/teacher partnership







# Students Who Can Benefit

## 2050 Students – 2050 Reasons

- Struggling
- Gifted & Talented
- Advanced Learners
- Rural, urban, suburban
- Special needs
- Home-bound
- Alternative Education
- Long-term suspended
- Discipline/behavioral issues
- Mobile families (e.g., military)
- Seeking 1 on 1 instruction
- Grappling with social and/or discipline issues
- Private school
- Homeschool-13% of total students





**UTAH**  
VIRTUAL ACADEMY <sup>SM</sup>



powered by



## What K8 looks like

- In addition to classes being loaded on line they receive boxes of supplies as well
- **Students have a set schedule saying what needs to be done each day.**
- **Families may choose to stick to this schedule or adjust the schedule to fit their lifestyle**
- **Students are free to go at their own pace**
- **Including, taking more time to study a difficult concept, dig deeper into an interesting subject and move quickly through easy concepts**
- Our Middle School Model is a hybrid between a K-5 single classroom model and a High School model of multiple teachers





**UTAH**  
VIRTUAL ACADEMY <sup>SM</sup>



powered by



# Lessons

- Students spend on average 50% of their time on the computer and the other 50% doing projects and working with books
- Most lessons end in an assessment to test mastery of that topic.
- If the students receive 80% or higher on the assessment, they are ready to move on, if they do not, they review the lessons and then retake the assessment
- If students already know a topic ,they can just test out of those lessons by taking a unit test



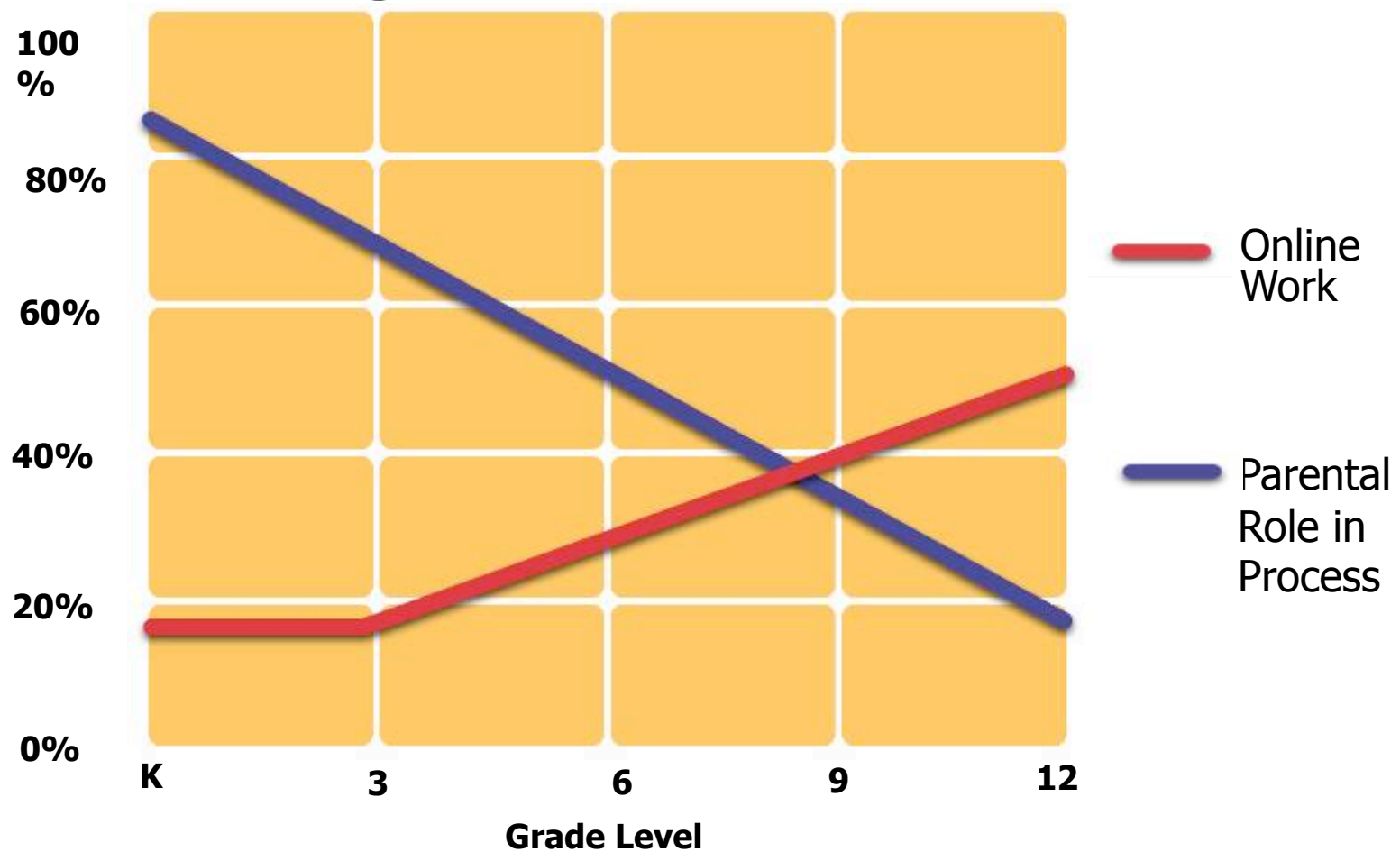
**UTAH**  
VIRTUAL ACADEMY <sup>SM</sup>



powered by



# Percentage of Work Online





**UTAH**  
VIRTUAL ACADEMY <sup>SM</sup>



powered by



# **Student/Learning Coach Expectations**

Students: 5.5 hours per day in learning. Must log attendance. Must obtain 80% proficiency to advance. Must take assessments.

Parents: Must also log attendance as fail-safe (state mandate). Learning Partner for Younger Grades, Monitor grades, Coordinate Multiple Student Families, Generally spends 10+ hours per child.



**UTAH**  
VIRTUAL ACADEMY <sup>SM</sup>



powered by



# Performance of UTVA/K12 Inc

## Quality of the Curriculum

<http://www.k12.com/what-is-k12/kudos-honors>

## Performance of Students

### **AYP Compliant**

- **2008-09**
- **2009-10**

### **UPASS Compliant**

- **2008-09**
- **2009-10**

**UTVA has each year improved on the previous year's performance.**

**UTVA grew 150% from 2008 to 2009 and 75% from 2009 to 2010**



**UTAH**  
VIRTUAL ACADEMY <sup>SM</sup>



powered by



# College Acceptance 2010

Arizona State University  
Brigham Young University  
Bryn Mawr College  
Clemson University  
Concordia College (Montreal)  
Cornell University  
Denver University  
Drexel University  
Duke University  
Embry-Riddle Aeronautical University -  
FL  
Gonzaga University  
King's College (UK)  
New York University  
North Carolina State University  
North Carolina University at Chapel  
Hill

Northwestern University  
Penn State University  
Princeton University  
SAE Institute (Dubai, UAE)  
St. John's University  
Stanford University  
The Juilliard School  
The Ohio State University  
The Ohio University  
Tulane University  
University of Arizona  
University of California, San Diego  
University of Colorado  
University of East Anglia (UK)  
University of Liverpool  
University of Michigan  
University of Oregon

University of Pennsylvania  
University of Pittsburgh  
University of Rochester  
University of San Diego  
USC  
University of Utah  
University of York (England)  
Vanderbilt University  
Washington and Jefferson  
College  
Washington State University  
West Virginia University  
Westminster College  
Whitworth University  
Xavier University  
York College



**UTAH**  
VIRTUAL ACADEMY <sup>SM</sup>



powered by



# State Testing & Assessments

- Students in grades 2-12 will take State Criterion tests in Reading, Math, and Science in the Spring
- K<sup>12</sup> lesson and unit assessments
- K<sup>12</sup> Scantron school-wide testing
- DIBELS-reading for grades 3-6
- DRA-Additional state reading assessment
- DWA-State writing assessment



# Mid Year Promotions

<b>Subject</b>	<b>Number of Courses</b>	<b>Percent of Promoted Courses</b>
ELA	49	35%
MTH	49	35%
HIS	16	11%
MUS	10	7%
SCI	9	6%
ART	7	5%
Total	140	





**UTAH**  
VIRTUAL ACADEMY <sup>SM</sup>

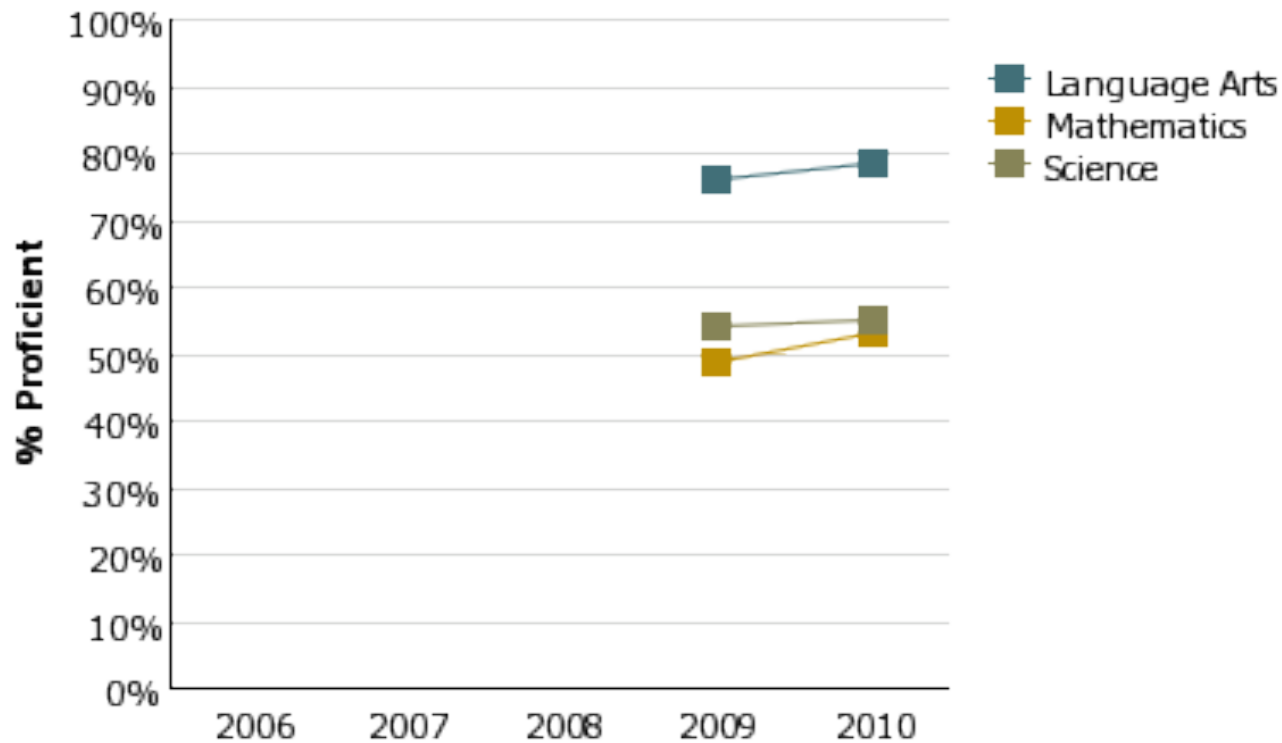


powered by



# CRT growth 2009 to 2010

**% Prof Over Time for UTAH VIRTUAL ACADEMY**





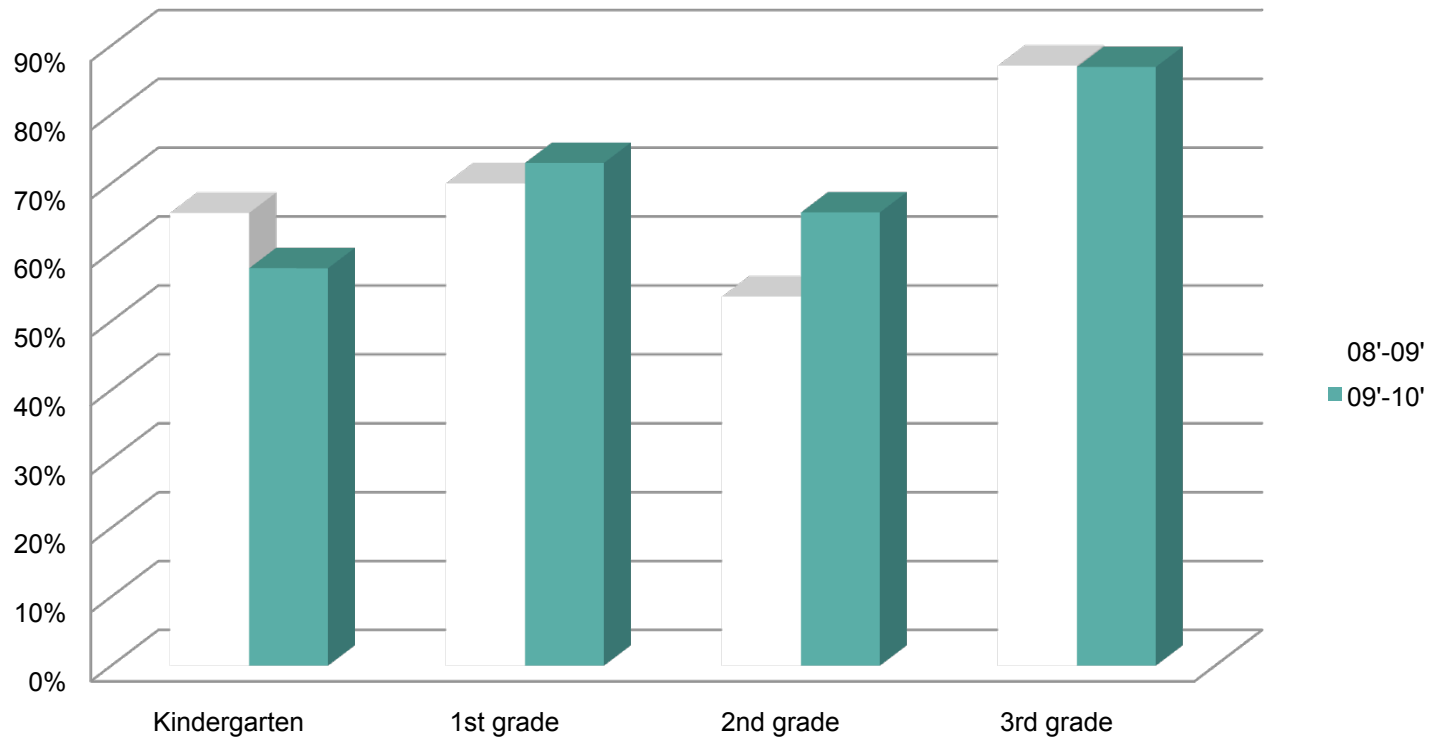
**UTAH**  
VIRTUAL ACADEMY <sup>SM</sup>



powered by



## % of Students on Grade Level on EOY Literacy Assessments





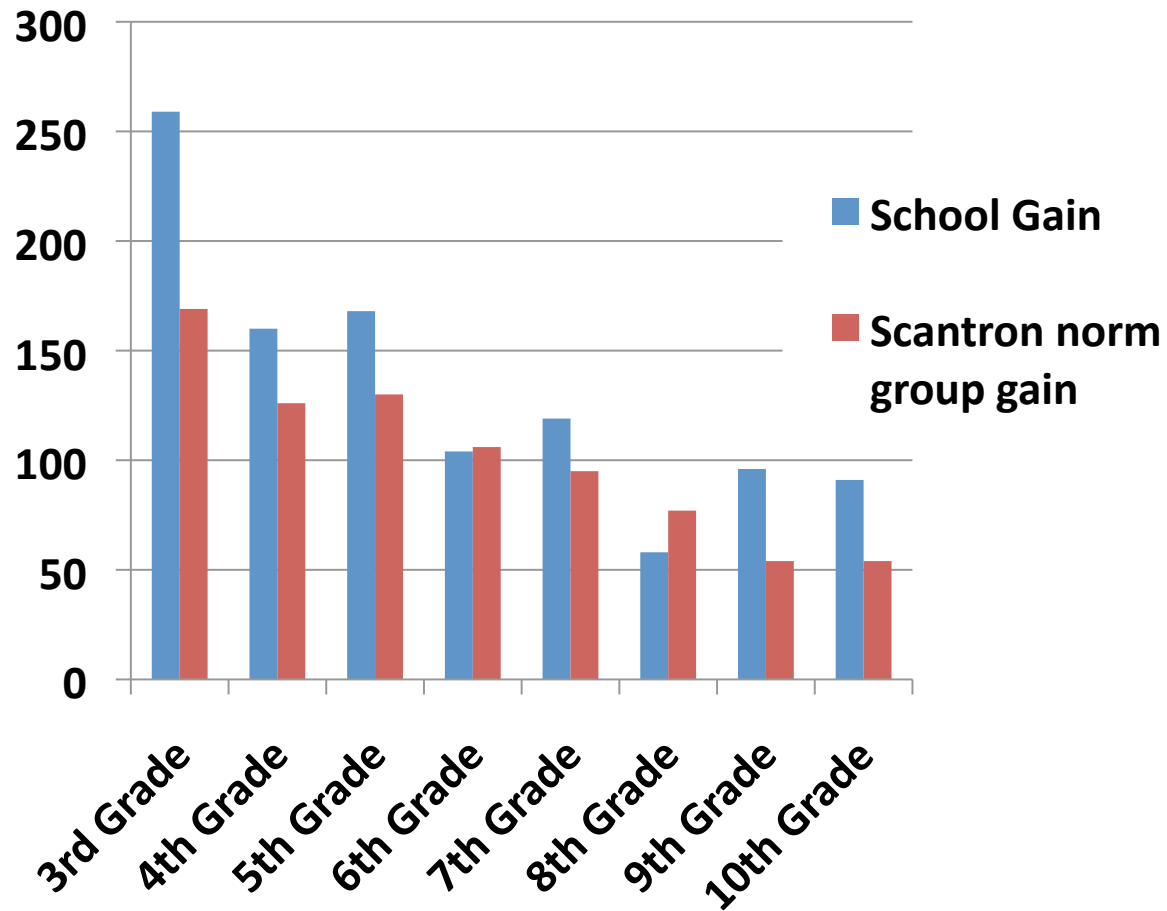
**UTAH**  
VIRTUAL ACADEMY <sup>SM</sup>



powered by



## Scantron Math Gains





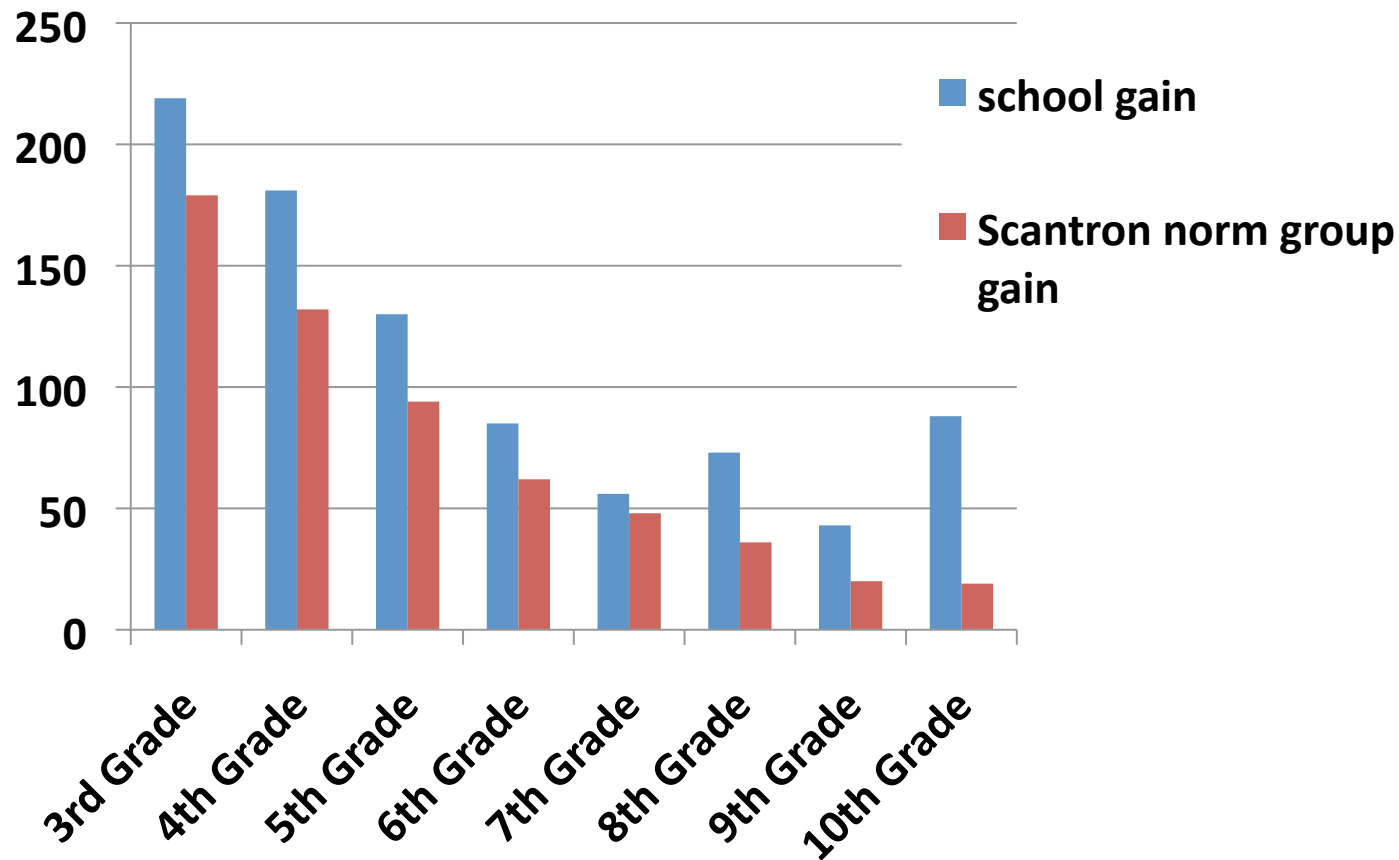
**UTAH**  
VIRTUAL ACADEMY <sup>SM</sup>



powered by



# Scantron Reading Gains





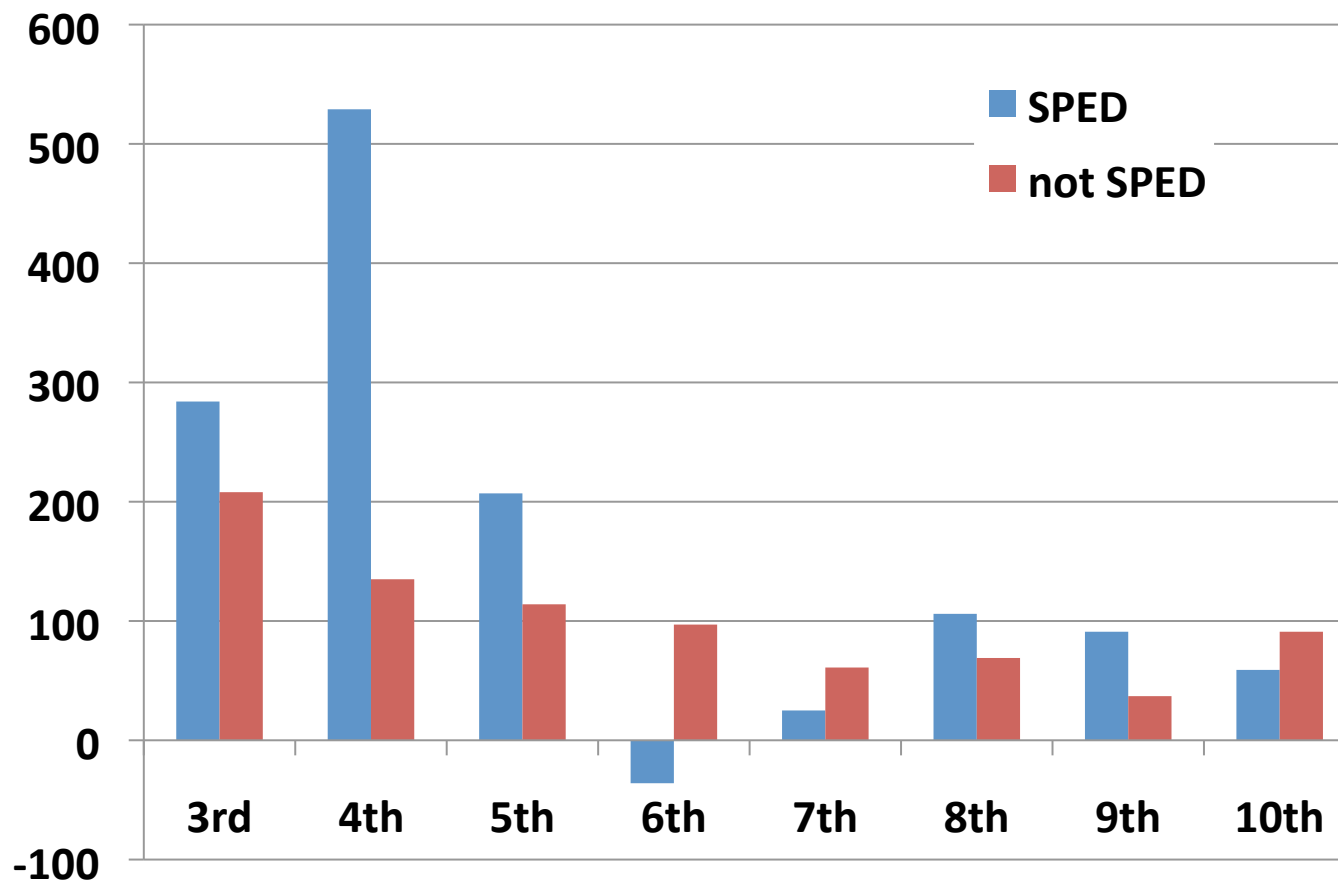
**UTAH**  
VIRTUAL ACADEMY <sup>SM</sup>



powered by

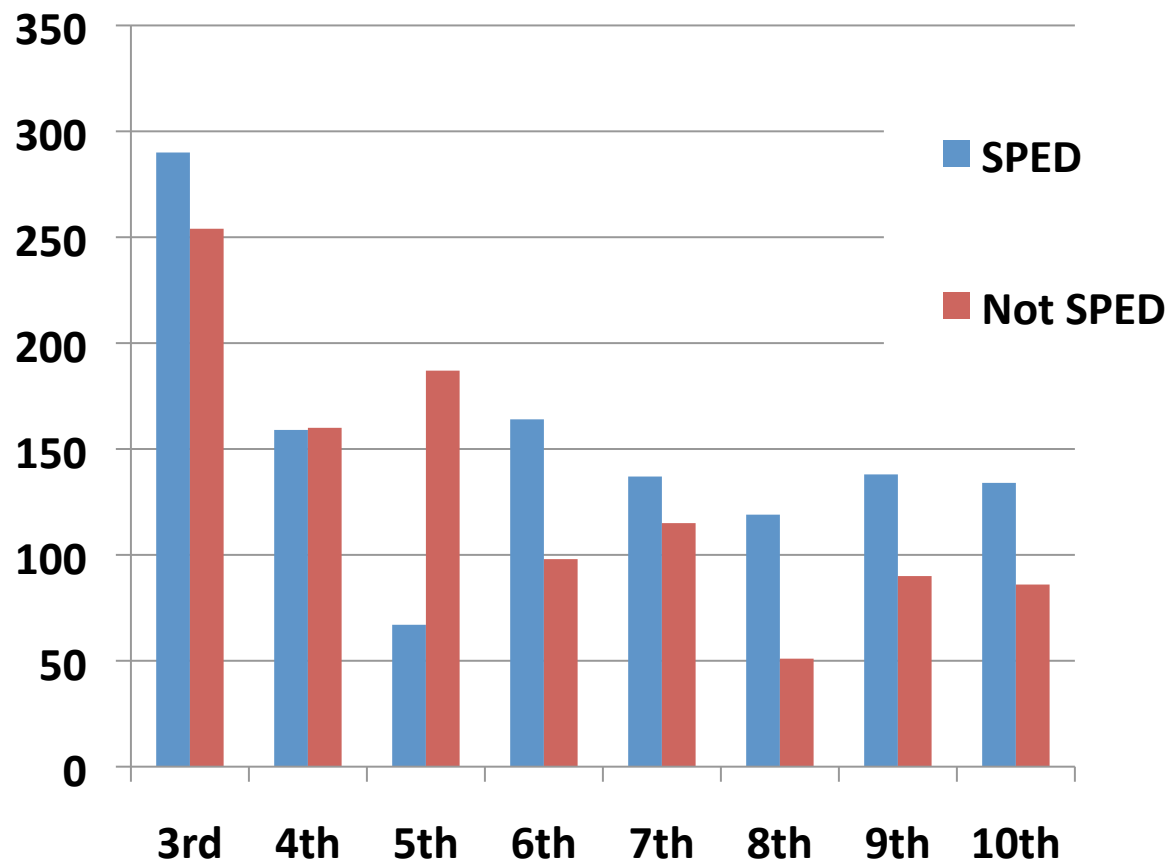


## Scantron SPED Reading Gains





## Scantron SPED Math Gains





## Schoolwide Gains over 1 year in months

A years gain will show as a 0. Anything above a zero is more than a years

Grade	Reading Gain
3rd Grade	6
4th Grade	7
5th Grade	4
6th Grade	3
7th Grade	2
8th Grade	4
9th Grade	-1
10th Grade	1
School Gain	3

Grade	Math Gain
3rd Grade	10
4th Grade	4
5th Grade	3
6th Grade	2
7th Grade	2
8th Grade	-3
9th Grade	2
10th Grade	-1
School Gain	2





**UTAH**  
VIRTUAL ACADEMY <sup>SM</sup>



powered by



## What the teacher does

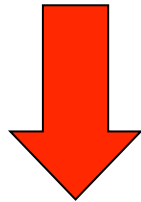
- Tracks student progress and attendance to make sure they are progressing through the curriculum adequately.
- Teaches small group and one on one direct instruction lessons to students
- Give s advise to learning coaches on how to teach certain concepts as well as deal with behavioral concerns
- Provides remediation classes where necessary
- Tailor lessons to meet the needs of the individual students. Enriching and simplifying where needed



# Student Experience

## Online Lessons

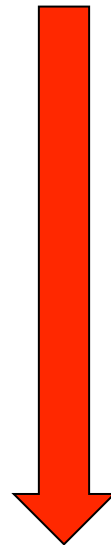
**State-aligned curriculum in all subjects**  
**Challenging, interactive, visual, integrated**



**Direct Instruction**  
**Live, Online Lessons in**  
**Math, Language Arts,**  
**Science, etc. 1x to 2x week**



**Individualized**  
**Lessons, curriculum,**  
**pathway, directed by**  
**teacher and Learning**  
**Coach**



**One-on-one, small-group teaching, as needed and regularly,**  
**individual time with teacher**



# Retention

08-09 High School: Start – 180, Retain – 86

Percentage retained: 47% (July 2009)

09-10 High School: Start – 312, Retain – 237

Percentage retained: 76% (July 2010)

---

08-09 K-8: Start – 320, Retain – 228

Percent retained – 71% (July 2009)

09-10 K-8: Start – 938, Retain – 703

Percentage retained – 74.3% (July 2010)



## **UTVA withdrawals rates 2008-09 to 2009-10 comparison**

16.6 percent withdrawals K-8 2010

19.9 percent withdrawals K-8 2009

*3.3 point difference (positive)*

26.2 percent withdrawals high school 2010

33.3 percent withdrawals high school 2009

*7.1 point difference (positive)*